



Quick Start Guide

Ariens Path-Pro SS21EC (938033 s/n 000101 & up)

- Step 1: Assemble Handlebar
- Step 2: Attach Remote Discharge Chute Handle
- Step 3: Attach Discharge Chute
- Step 4: Check Auger Control Bar
- Step 5: Add Oil
- Step 6: Fill Engine Fuel Tank
- Step 7: Starting Engine
- Step 8: Stopping the Engine



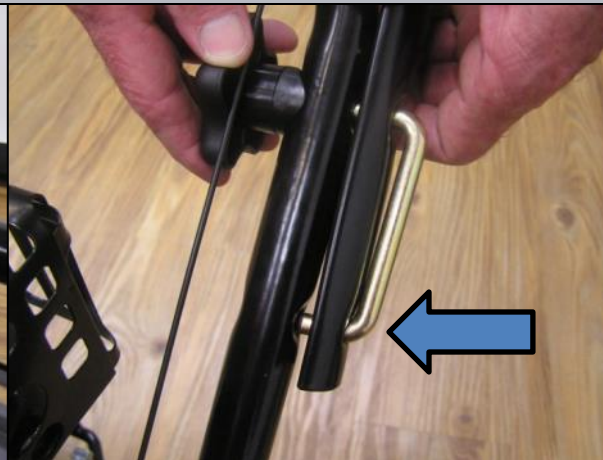
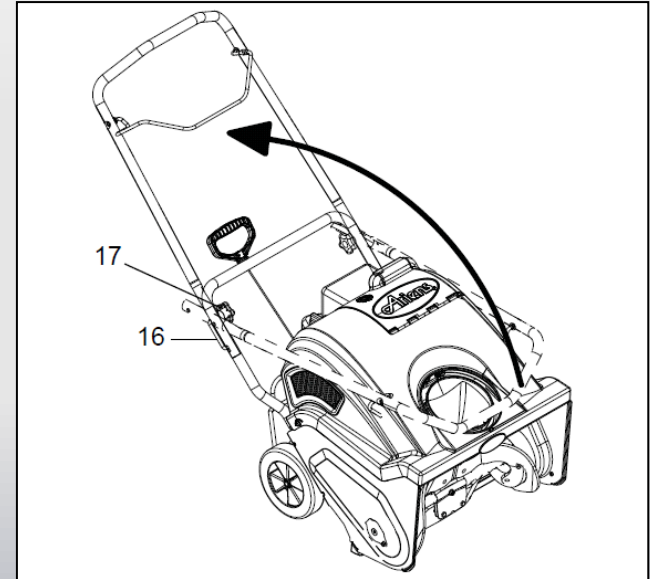
READ AND UNDERSTAND ALL INSTRUCTION, WARNING, AND DANGER LABELS.

IMPORTANT: READ OPERATOR'S MANUAL AND ENGINE MANUAL THOROUGHLY AND FOLLOW THE IMPORTANT SAFE OPERATION PRACTICES BEFORE OPERATING.



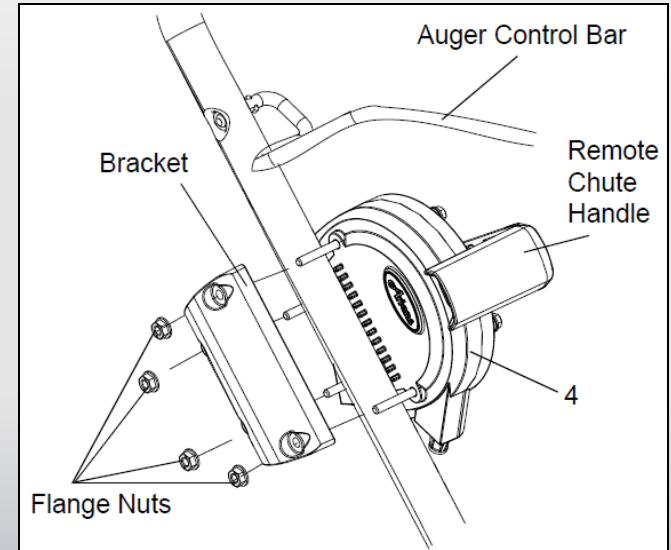
Step One: Assemble Handlebar

1. Loosen knobs (#17) on each side of handlebar and rotate handlebar to operating position.
2. Insert lower end of pivot bolt (#16) into handlebar holes.
3. Ensure auger control cable is not pinched and tighten knobs. Do not over tighten.



Step Two: Attach Remote Discharge Chute Handle

1. Remove flange nuts and bracket from remote chute handle assembly (#4).
2. Position remote chute handle assembly on handlebar.
3. Place bracket on handlebar and secure with flange nuts. Do not over tighten.
4. Move remote chute handle completely forward and rearward to ensure proper operation.
5. Place remote chute handle halfway between full forward and full rearward.

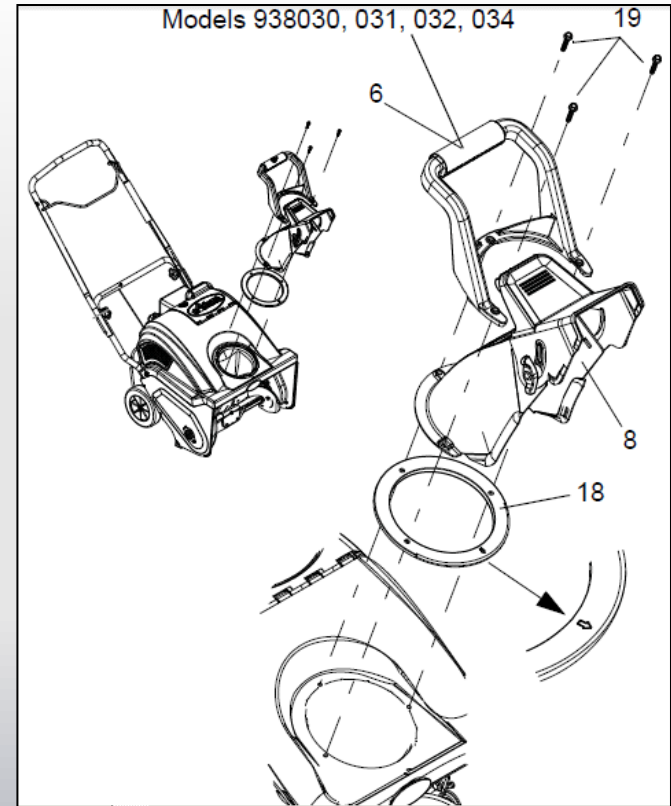




Step Three: Attach Discharge Chute

1. Place water guard ring (#18) on discharge chute hole.
2. Position discharge chute (#8) onto ring.
3. Ensure holes in all pieces align and secure with three screws (#19).
4. Move remote chute handle to ensure proper operation of discharge chute.

NOTE: This model does not have the position chute handle (#6) in the diagram





Step Four: Check Auger Control Bar



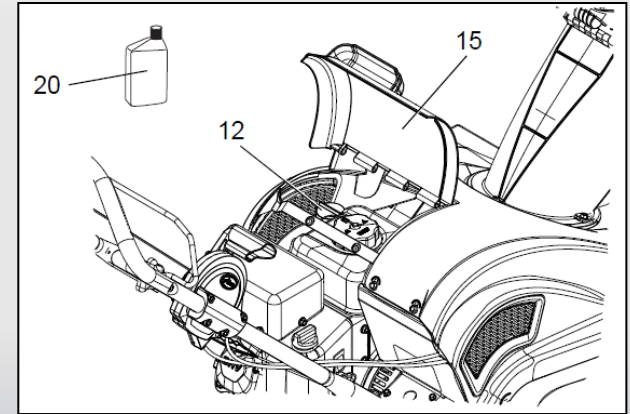
Engage auger control bar to ensure proper operation. There should be no excessive tension on cable. When auger control bar is disengaged, there should be slight slack in cable and no tension.

NOTE: See Owner's Manual if adjustment is necessary.



Step Five: Add Oil

1. Open fuel and oil door (#15) to access oil fill (#12).
2. Remove cap and add 16 oz. 5W-30 oil (#20). Check oil level on dipstick to ensure proper operating level. See Owner's Manual for instructions.
3. Replace cap and close door.





Step Six: Fill Engine Fuel Tank



Fill fuel tank. DO NOT OVERFILL! See *FUEL TANK* in Owners Manual.



Step Seven: Starting the Engine



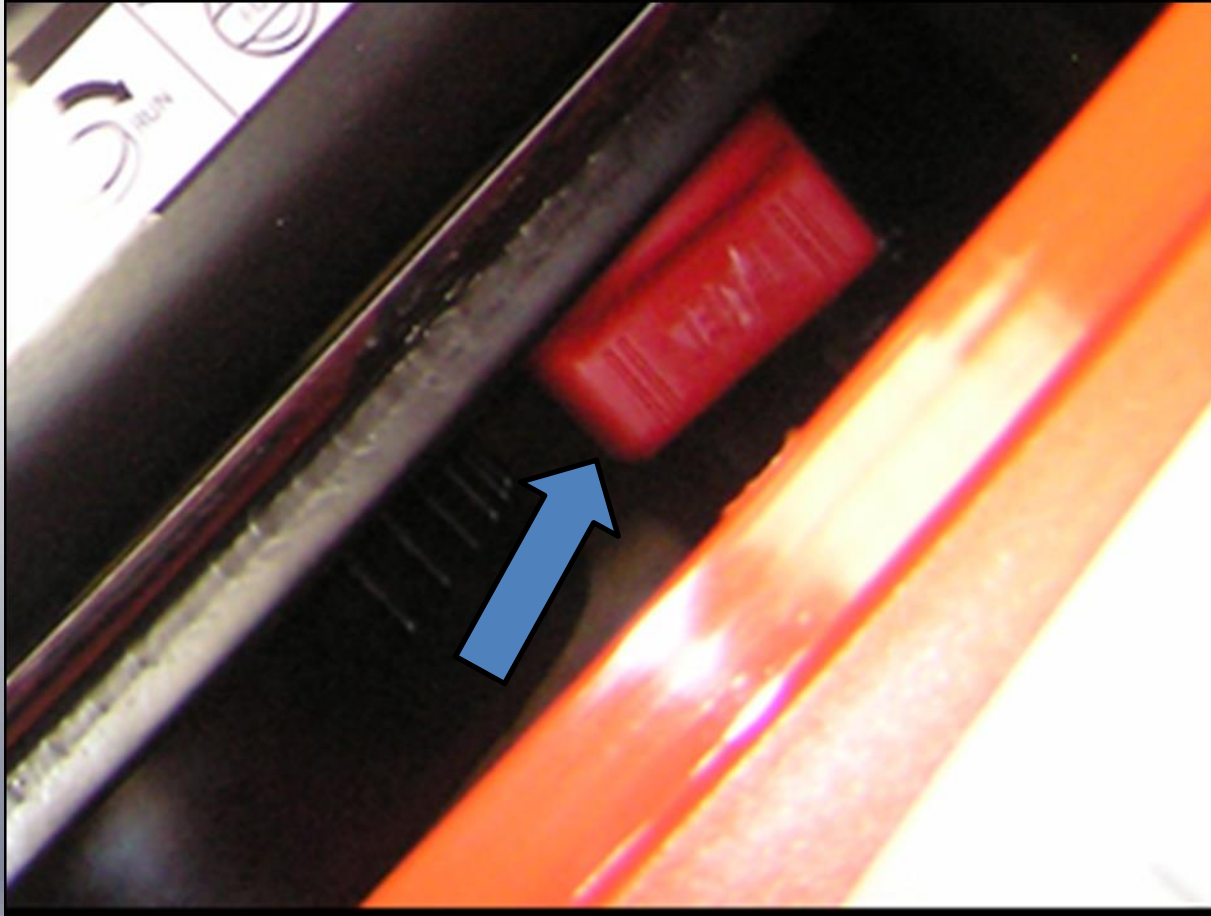


Starting Engine / Step A: Engine Switch



Move engine switch to ON position.

Starting Engine / Step B: Fuel Shut-off Valve



Open fuel shut-off valve. The fuel shut-off valve is open when it is horizontal.

NOTE: When viewing the Sno-Thru from the operating position, the fuel shut-off valve is located on the right side of the engine, the fuel and oil door must be open to access it.



Starting Engine / Step C: Choke



If engine is cold, move choke to FULL choke position.

NOTE: Do not apply choke to a warm engine.



Starting Engine / Step D: Prime



Push primer bulb twice.

Note: Do not push primer bulb to start a warm engine.



Starting Engine/ Step E: (Manual Start)



Slowly pull recoil starter handle until engine compression makes pulling difficult. Let starter rewind a little, and then pull smoothly and quickly to start engine. Repeat step as needed.



Starting Engine / Step E: (Electric Start)



Connect a power cord to power cord receptacle and then plug cord into a wall outlet.

CAUTION: Use cord that is minimum of 13 amp, 16 Gauge, 3 wire grounded plug, UL listed, CSA Certified. Cord must be labeled suitable for outdoor use.

NOTE: When engine starts, disconnect power cord from wall outlet, then disconnect cord from power cord receptacle.



Starting Engine / Step F: (Electric Start)



Press and hold starter button.

Note: Do not hold the electric starter button down for more than 5 seconds. Wait at least 1 minute before additional starting attempts.



Starting Engine / Step G: Warm up



Allow the engine to warm up for 1-2 minutes, move the choke control to the **CHOKE OFF** position.

Step Eight: Stopping the Engine



1. Release auger control bar.
2. Turn engine switch to OFF position.
3. Close fuel shut-off valve.

NOTE: The fuel-shut off valve is closed when it is narrow and vertical when viewed from above.



Additional Resources

- Refer to Owners Manual and Engine Manual
- Contact Ariens Company

www.ariens.com

Phone: 920-756-4688

E-mail: info@ariens.com